

Lesson 25: Ocean Currents and Sea Surface Temperature

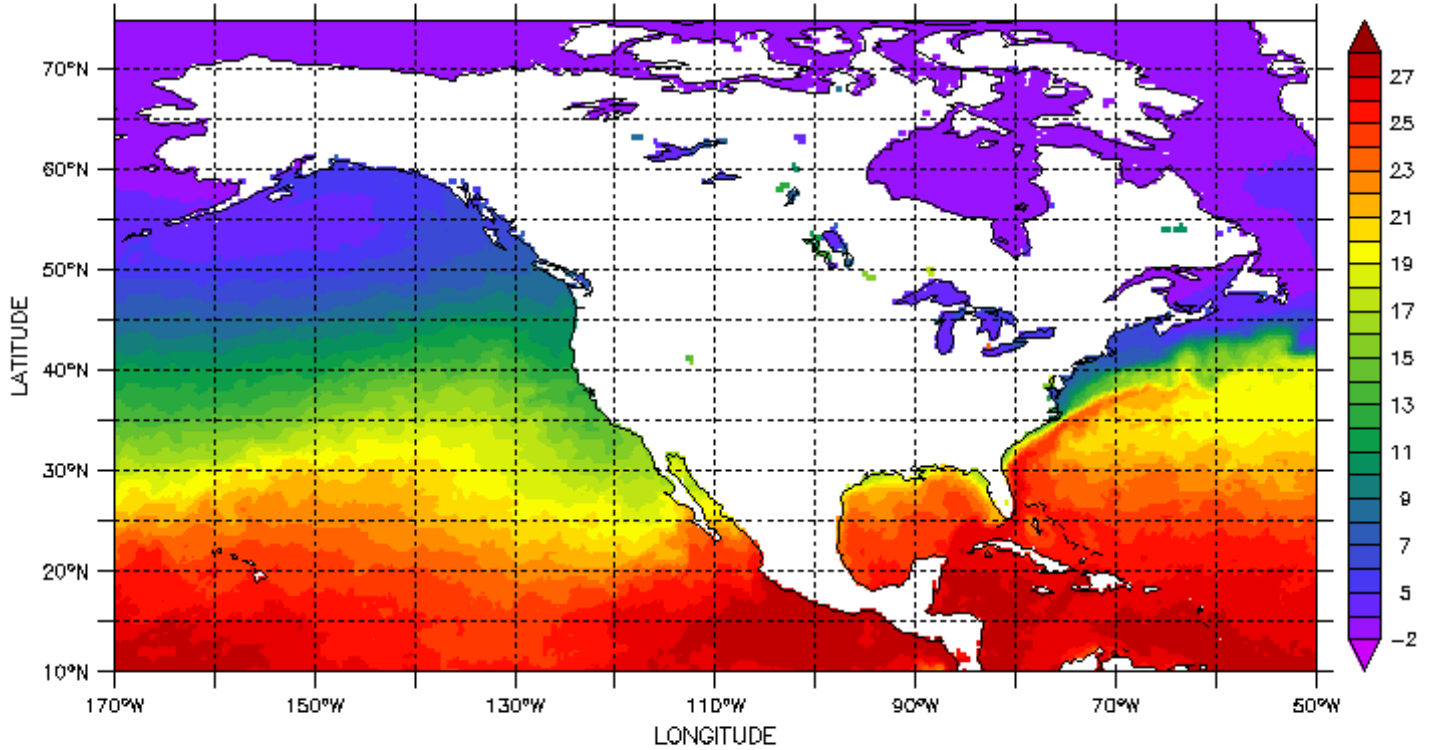
Example: North America

LAS 7.+ / Ferret 6.1 NOAA/PMEL

TIME : 06-JAN-1997 03:00

DATA SET: mcsst_1dayperwk.des

Strided 3 in X, 4 in Y



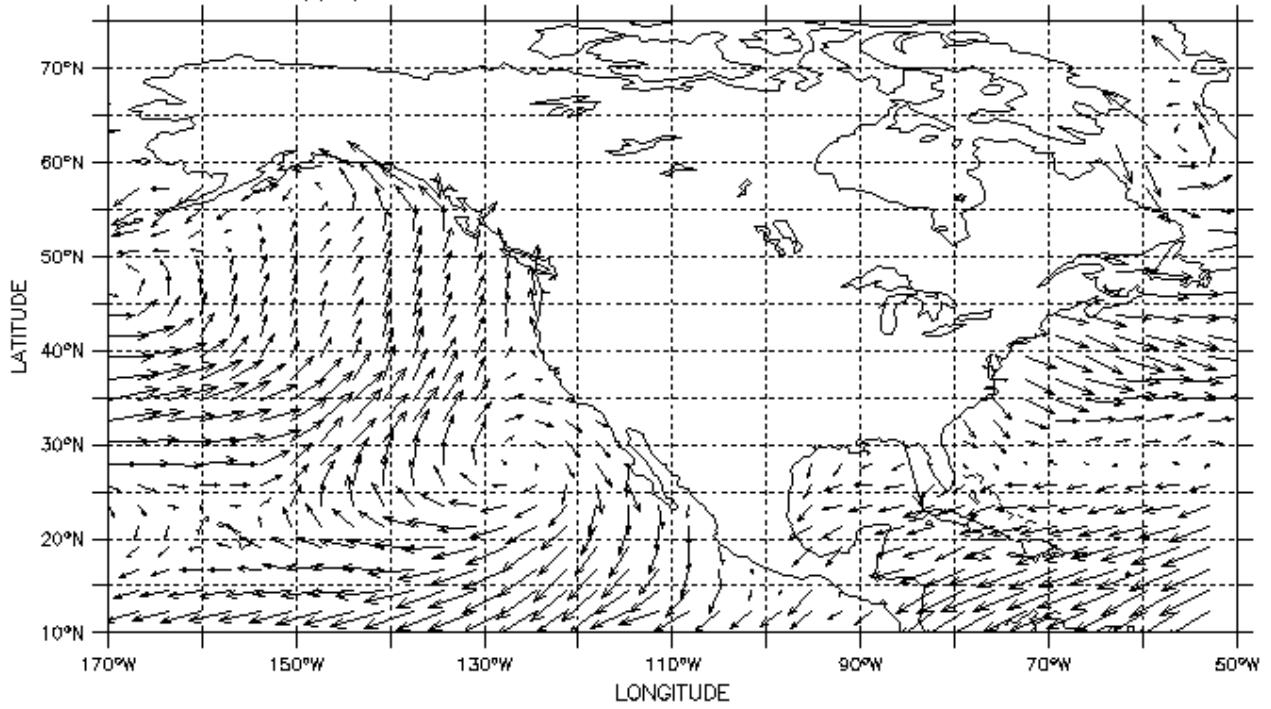
Weekly Sea Surface Temperature (MCSST) (degC)

LAS 7.+ / Ferret 6.1 NOAA/PMEL

Z (meters) : 10
TIME : 15-JAN-1997 00:00

DODS URL: <http://mydasdata.larc.nasa.gov/thredds/dodsC/>
DATA SET: wind_aggregation

NOAA/NCDC Blended monthly 0.25-degree Sea Surface Winds
Automatic vector xkip,ykip



Wind Speed - U Component - Monthly (m/s), Wind Speed - V Component - Monthly (m/s)

