



PROJECT OCEANOLOGY



Creature Feature: Hermit Crab

STEAM Connection

The hermit crab in [House for Hermit Crab](#) meets many animals along the way. One thing these animals have in common is that they live on or near the bottom of the ocean. Scientists call organisms that live on the bottom **benthic**. If animals don't live on or near the bottom then they likely live in the open ocean and they are known as **pelagic**. Sort the animals below based on whether you think they are **benthic** (living on the bottom) or **pelagic** (living in the open ocean).

| Pelagic (Open Ocean) | | |
|----------------------|--|--|
| | | |
| | | |
| Benthic (Bottom) | | |
| | | |
| | | |

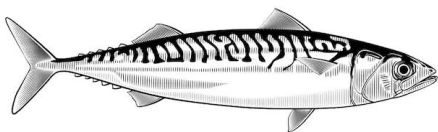
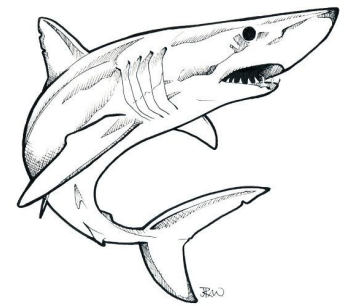
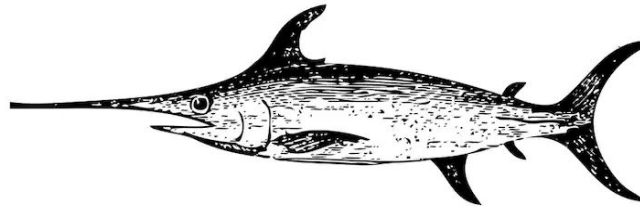
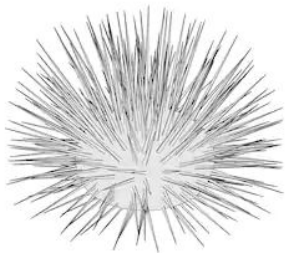
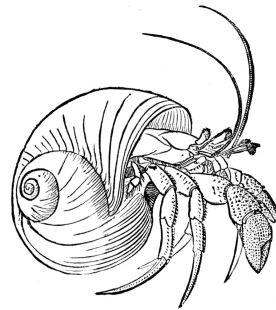
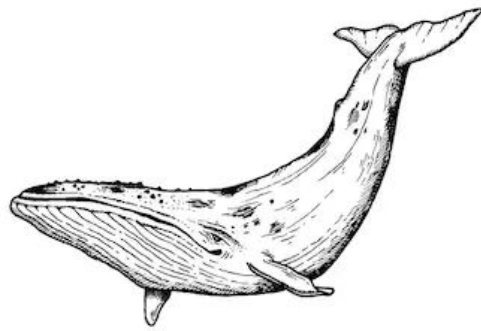
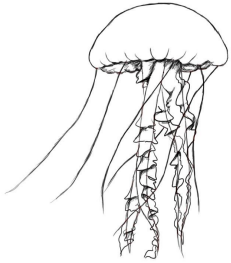
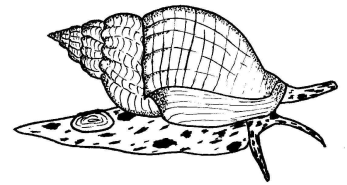
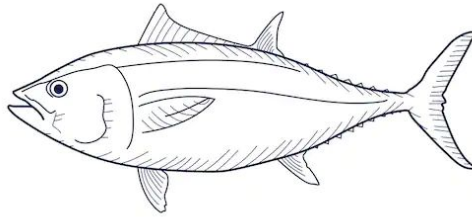
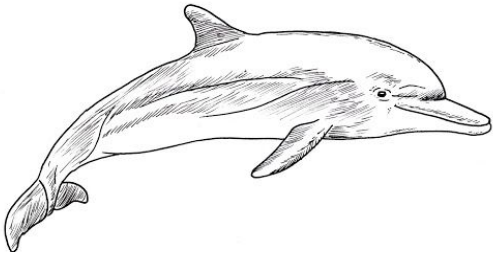
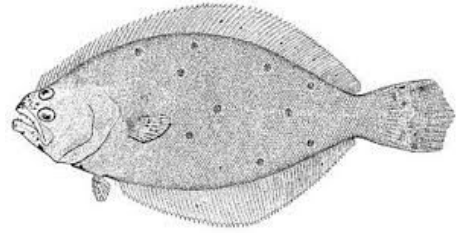
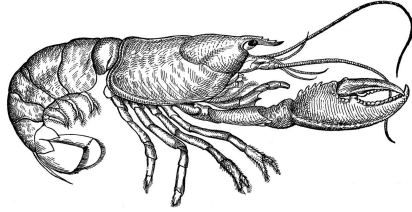
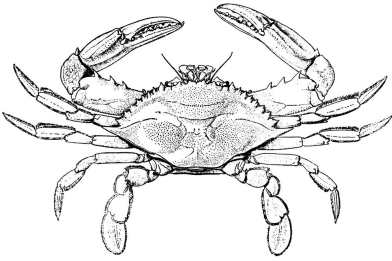
#ProjectOCreatureFeature



PROJECT OCEANOLOGY



Creature Feature: Hermit Crab STEAM Connection



#ProjectOCreatureFeature